

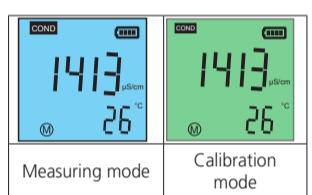
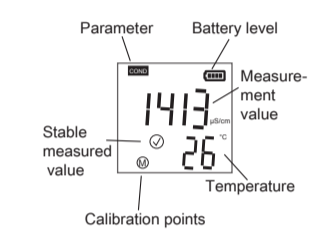


CLS

COMMERCIAL LEISURE SUPPLIES



Display



Keyboard function

Short keystroke (1 sec.) - Long keystroke (3 sec.)

| | | | |
|--|-----------------|-------------------------|----------------------------|
| | Short keystroke | | Switch on device |
| | Long keystroke | | Switch off device |
| | Short keystroke | in the measuring mode | Backlight on/off |
| | Long keystroke | in the off mode | Open settings |
| | Short keystroke | in the calibration mode | Cancelling the calibration |

| | | | |
|--|-----------------|-----------------------|---|
| | Short keystroke | in the measuring mode | Change of measuring parameters or unit |
| | Short keystroke | In setting | <ul style="list-style-type: none"> Navigation through settings (P1-P7) Change setting |

| | | | |
|--|-----------------|-------------------------|--|
| | Long keystroke | in the measuring mode | Start calibration |
| | Short keystroke | in the calibration mode | Calibration |
| | Short keystroke | In setting | Selection or confirmation of a setting |
| | Short keystroke | at "Auto-HOLD" | Cancel "HOLD" function |

Settings

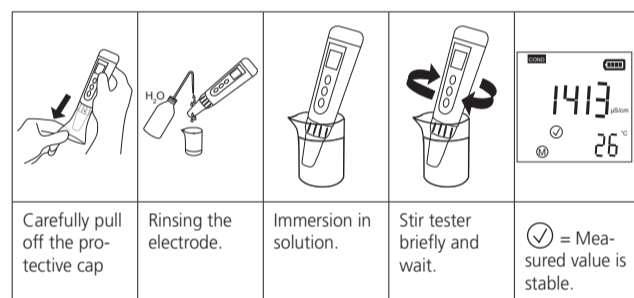
In off mode, press for 3 seconds: Opening Settings.

Navigate Confirm

Blue marked = factory setting

| Parameter | Selection | Meaning |
|---|------------------------------------|---|
| P1 Auto-Hold | a) On b) Off | when: Measured value min. 10 s stable Auto-Hold switched off |
| P2 Backlight | a) On b) 1 min c) Off | Switched on continuously Switched on for 1 minute Continuously switched off |
| P3 Temperature compensation coefficient | 0 - 4% 2% | Setting the linear temperature compensation |
| P4 TDS conversion factor | 0.4 - 1 0.71 | Setting of the TDS conversion factor |
| P5 Salinity Unit | a) ppt b) g/L | Display in ppt Display in g/L |
| P6 Temperature unit | a) °C b) °F | Display in °C Display in °F |
| P7 Factory calibration | a) Yes b) No | Calibration is reset |

Measurement of the parameters



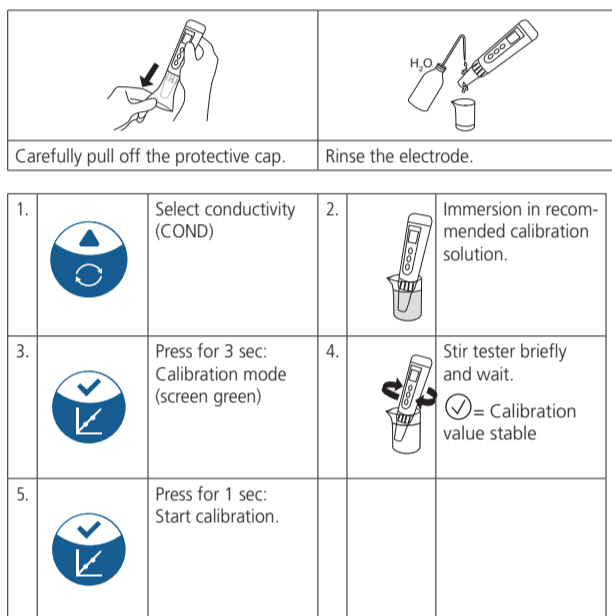
Note:

- Change between conductivity (COND), TDS and salinity (SAL)
- Press at "Hold" for new measurement recording.

Calibration conductivity

Note: Recommendation: 1-point calibration depending on the measuring range.

| Measuring range | Calibration solution |
|------------------|----------------------|
| 0 - 100 µS/cm | 84 µS/cm |
| 100 - 2000 µS/cm | 1413 µS/cm |
| 2 - 20 mS/cm | 12,88 mS/cm |



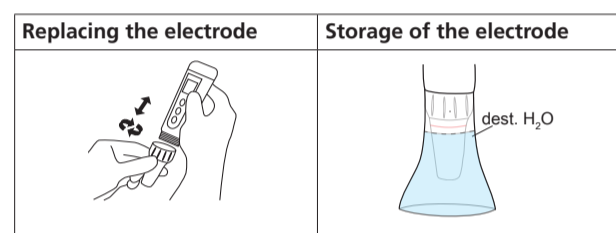
After successful 1, 2 or 3 point calibration, is shown on the display:

| | |
|--|------------|
| | 84 µS/cm |
| | 1413 µS/cm |
| | 12,88mS/cm |

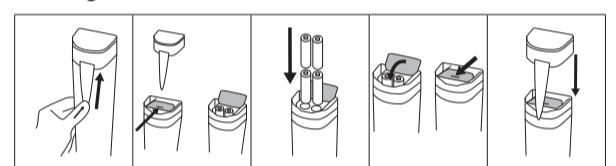
Note: 1000 µS/cm = 1 mS/cm

SD 30 Con - TDS - Salt/T Specifications

| | |
|-------------------------|--|
| Conductivity (mS/cm) | Measuring range: 0.01-20; resolution: 0.01; accuracy: ±1% F.S. |
| TDS (ppt) | Measuring range: 0.01-20; resolution: 0.01 |
| Salinity (ppt) | Measuring range: 0.01-10; resolution: 0.01 |
| Temperature (°C) | Measuring range: 0-50; resolution: 0.1; accuracy: ±0.5 |
| Background light | Blue: Measurement; Green: Calibration |
| HOLD | Measured value is frozen |
| | Flashing, battery change is required |
| Auto. switch off | after 8 minutes without operation |
| Housing protection type | IP67 |
| Batteries | 4 x AAA Batteries |



Exchange batteries



Caution: Insert all batteries with the positive terminal facing up. Incorrect insertion of the batteries could result in damage to the meter.

Note: Make sure that the battery cover is completely closed to ensure water tightness.

Error messages and procedure

| | Reason | Procedure |
|----------------------------------|------------------------|--|
| Err 1 | old calibration | Use of new calibration solutions |
| Err 2 | -Key pressed too early | Wait for then press |
| Measured value fluctuates | Contamination | Cleaning the electrode with detergent Rinse the electrode with deionised Water Important: Do not rub the black pins as the platinum coating may be damaged. |

Accessories

| Art.-No. | Description |
|----------|---|
| 726654 | Conductivity solution 1413 µS/cm (NIST), 90 ml |
| 726684 | Conductivity solution 12.88 mS/cm (NIST), 90 ml |
| 720035 | SD30 Con/TDS/Salt/T replacement electrode |
| 1950026 | AAA batteries, set of 4 |
| 384801 | Measuring beaker 100 ml |
| 457022 | Deionised water for rinsing |

Warranty

The warranty period for the SD30 is 2 years from the date of purchase and 6 months for the electrode. Excluded from the warranty are damages caused by improper handling or mechanical damage.

Complete instructions with accessories list can be found at www.lovibond.com (Download Centre).